

# Welcome Day 19 June 2020



Bielefeld Graduate School in History and Sociology  
Dr. Sabine Schäfer

# 3 leading principles

Interdisciplinarity: joint institution of Department of History and Faculty of Sociology

Internationality: doctoral researchers from all over the world

Self-initiative: Bottom-up processes and events organised by doctoral researchers

→ Multitude of perspectives

# BGHS community (June 2020)

163 doctoral researchers: 65 in history, 98 in sociology  
about 47% female, almost 36% international  
4% BGHS doctoral scholarship holders,  
44% academic staff, 11% scholarship holders and  
41% individually funded researchers

175 alumni since 2008

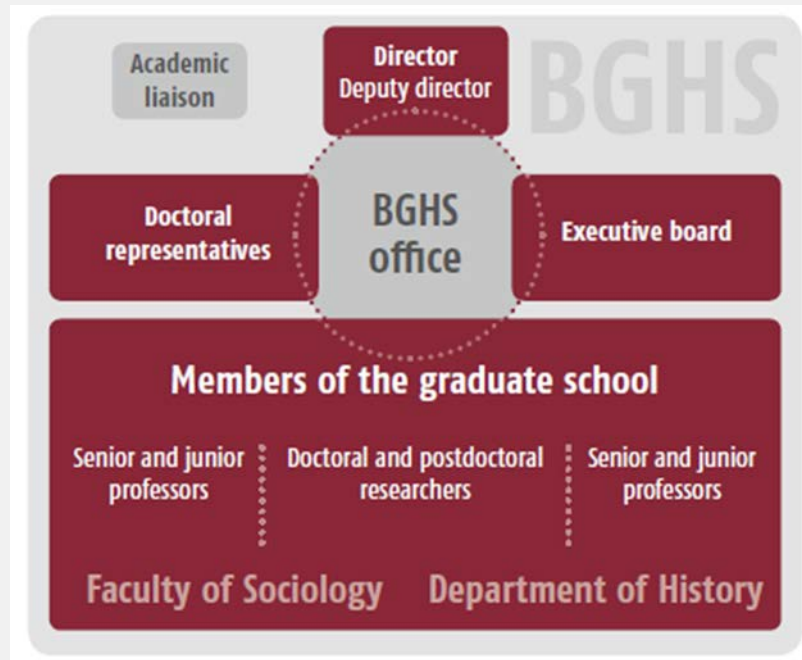
50 professors:  
20 in Department of History,  
30 in Faculty of Sociology

# BGHS structure

Ursula Mense-Petermann (*director*)  
Thomas Welskopp (*deputy director*)

*Academic liaison*  
Hartmann Tyrell

*Doctoral representatives*  
Sebastian Schlerka  
Daniele Toro  
Georg Kessler  
Filip Vukusa  
Abel Zekarias  
Olga Olkheft



*BGHS office*  
Max Christ  
Nathale Melo Martins  
Ulf Ortmann  
Sabine Schäfer

*Executive board*  
Ruth Ayaß  
Antje Flüchter (dean)  
Oliver Flügel-Martinsen  
Frank Grüner  
Britta Hochkirchen  
Ursula Mense-Petermann  
Verena Molitor  
Christina Morina  
Ulf Ortmann  
Detlef Sack (dean)  
Sebastian Schlerka  
Jost Reinecke  
Daniele Toro  
Thomas Welskopp

# Communication & information

Weekly newsletter as central source of information

BGHS blog on website

For study programme please see eKVV (electronic study programme)

For information about the BGHS please see [www.uni-bielefeld.de/bghs](http://www.uni-bielefeld.de/bghs)

or contact us: [bghs@uni-bielefeld.de](mailto:bghs@uni-bielefeld.de)

For information on the faculties please see:

Department of History  
<https://www.uni-bielefeld.de/geschichte>

↓  
Contact:  
Dr. Bettina Brandt  
([bettina.brandt@uni-bielefeld.de](mailto:bettina.brandt@uni-bielefeld.de))

Faculty of Sociology  
[https://www.uni-bielefeld.de/\(en\)/soz/](https://www.uni-bielefeld.de/(en)/soz/)

Contact:  
Yvonne Schoßmeier  
([yvonne.schossmeier@uni-bielefeld.de](mailto:yvonne.schossmeier@uni-bielefeld.de))

# Curriculum

**Mandatory programme: 6 CP**

one Theory Class  
= 0.5 CP



two to four  
Transferable Skills  
Workshops = 1 CP  
(BGHS, PEP or others)

one Methods Class  
= 0.5 CP

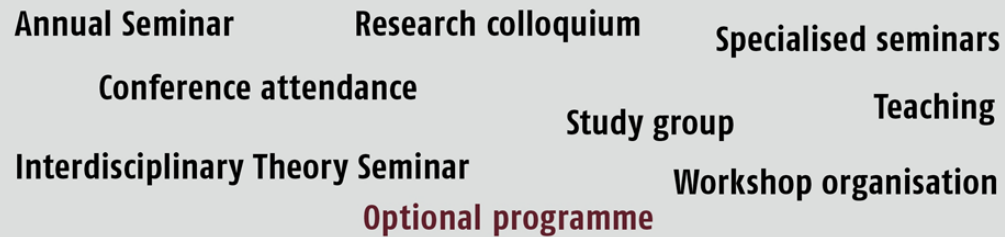
four Research Classes  
= 4 CPs

*Conference paper:*  
0.5 CP

*Organising a workshop:*  
1 CP

*Participation in a study  
group: 0.5-1 CP*

*Post as a doctoral  
representative: 0.5 CP*



*Colloquium with own paper: 1 CP*

*Colloquium without own paper:*  
0.5 CP

*Research Retreat: 0.5 CP*

*Teaching a course of one's own:*  
0.5-1 CP

**Optional programme: 4 CP**

# Doctoral training programme

Supervision Agreement of doctoral researchers, supervisors and BGHS

Support in conflict situations: academic liaison Prof. Dr. Hartmann Tyrell or Sabine Schäfer

Annual progress reports (first report after 6 months)

Confirmations of attendance

“Transcript of the Doctoral Programme” after completion of study programme

# Special BGHS features

Post as a doctoral researchers' representative

Research Retreat in Vlotho (27-28 November 2020)

Organisation of a workshop (funding available)

Organisation of study group, interdisciplinary seminar, interdisciplinary colloquium

Public lecture series “Linie 4”

Working Paper Series

Advice on funding opportunities and other things



# Welcome to the BGHS!